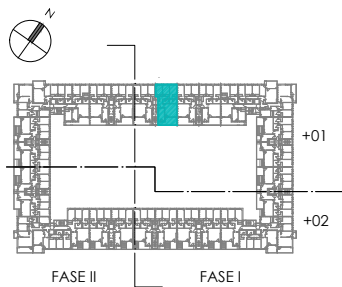
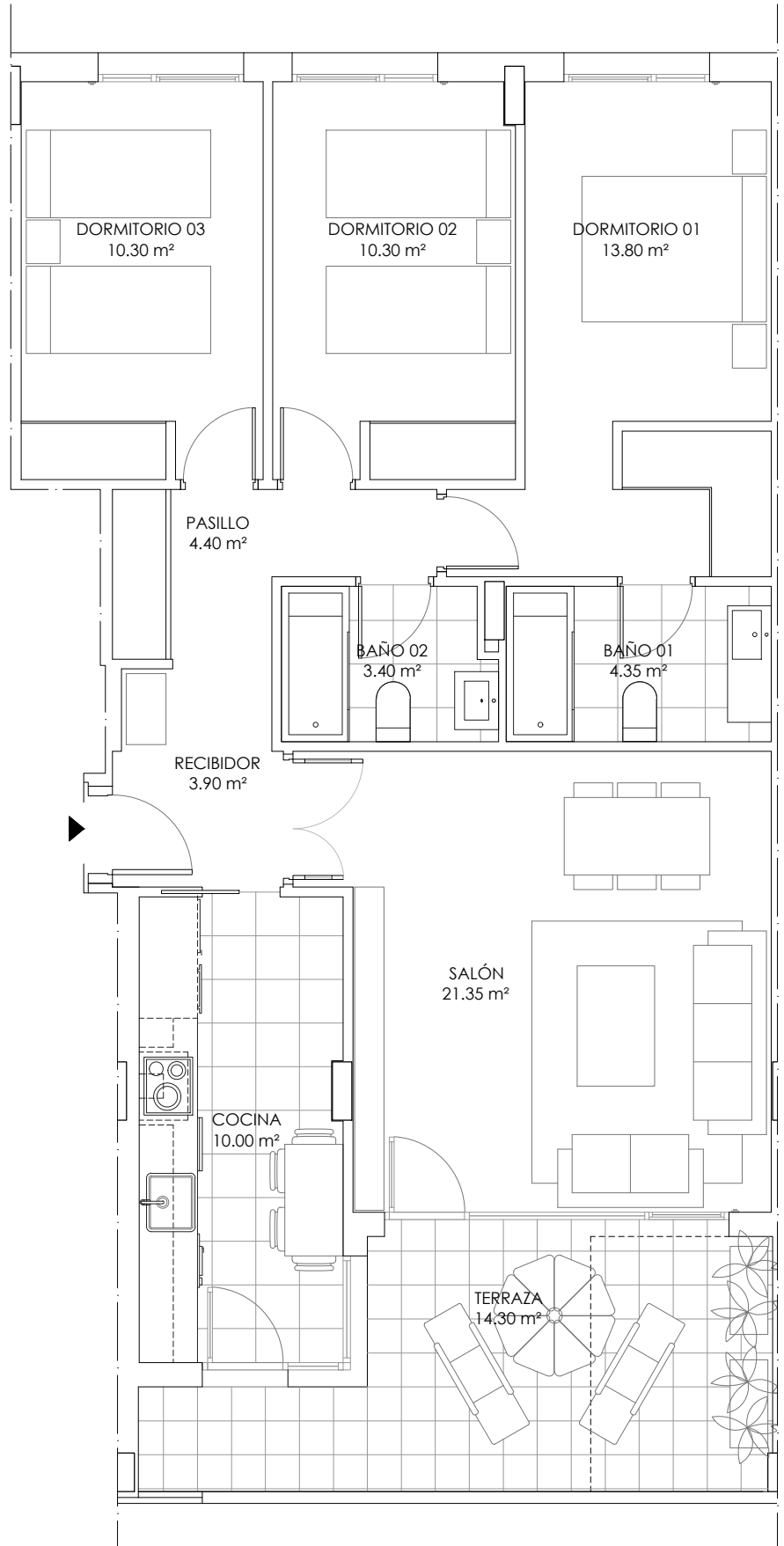


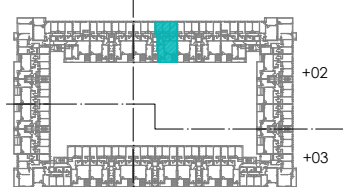
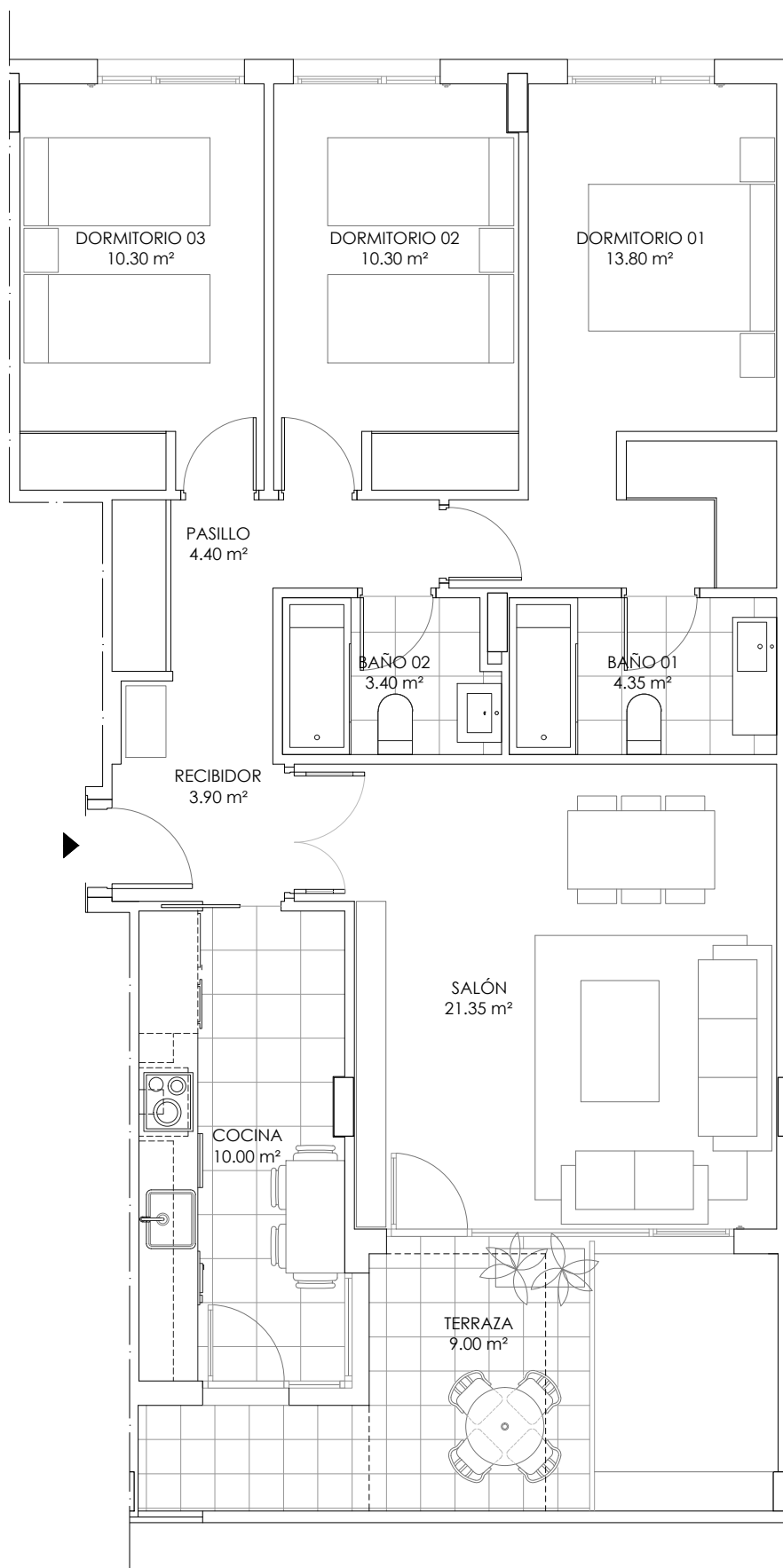
RESIDENCIAL UNIQUE / FASE I VIVIENDA TIPO 01

SUPERFICIES UTILES		
CERRADA	TERRAZAS	TOTAL
81.80 m ²	14.30 m ²	96.10 m ²



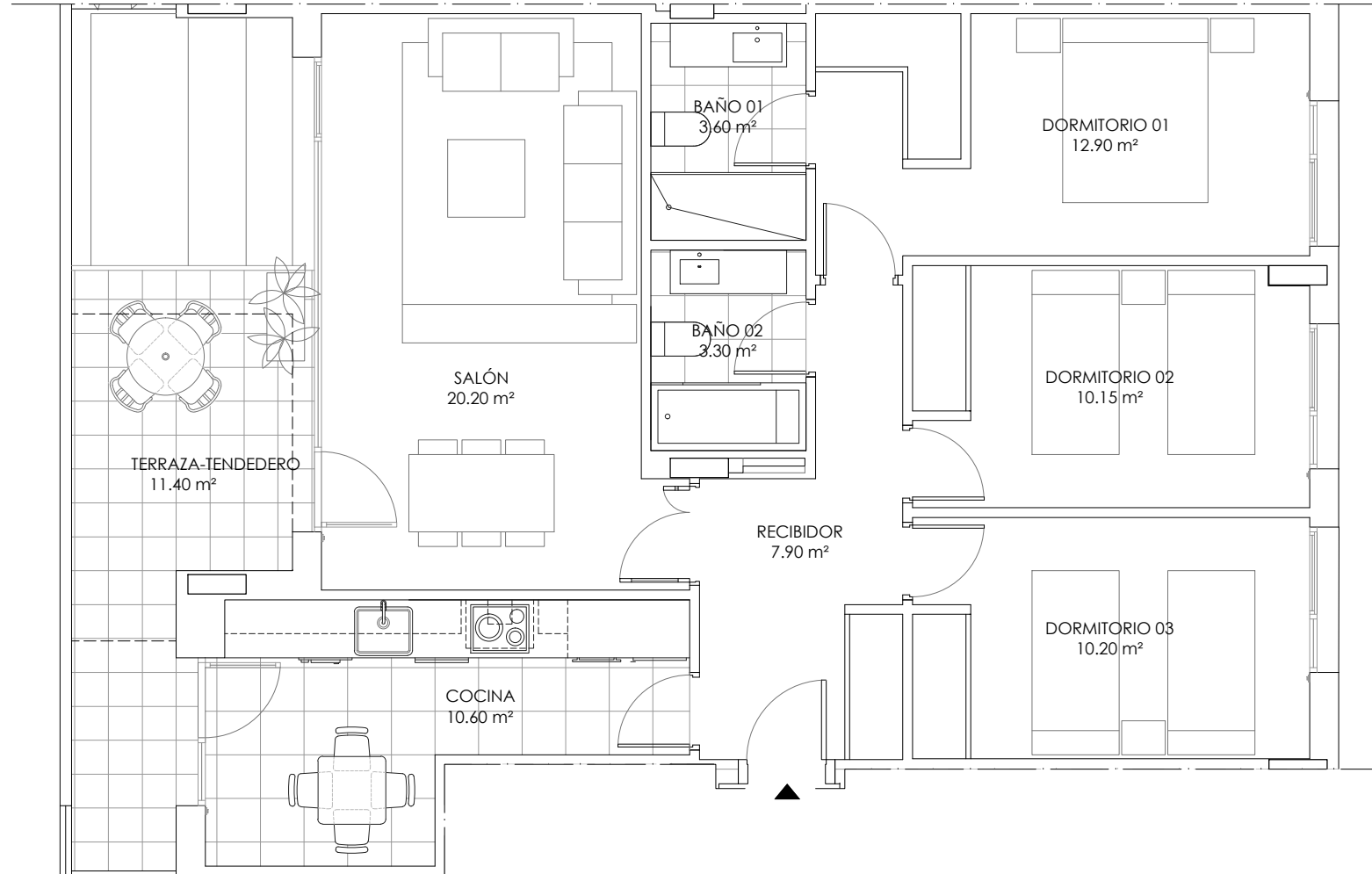
RESIDENCIAL UNIQUE / FASE I VIVIENDA TIPO 02

SUPERFICIES UTILES		
CERRADA	TERRAZAS	TOTAL
81.80 m ²	9.00 m ²	90.80 m ²



FASE II FASE I

RESIDENCIAL UNIQUE / FASE I VIVIENDA TIPO 03



SUPERFICIES UTILES		
CERRADA	TERRAZAS	TOTAL
78.85 m ²	11.40 m ²	90.25 m ²

